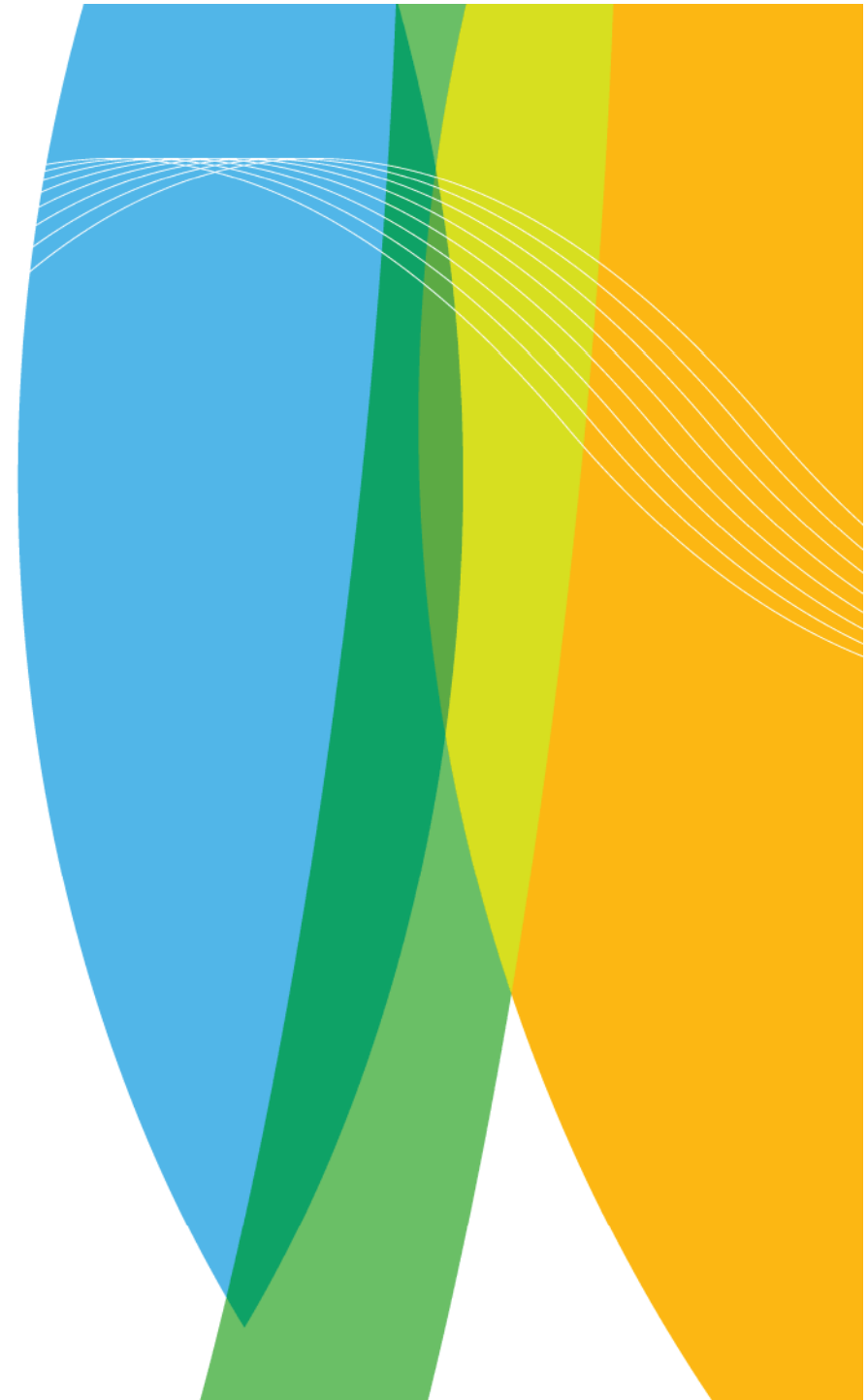




ILMATIETEEN LAITOS  
METEOROLOGISKA INSTITUTET  
FINNISH METEOROLOGICAL INSTITUTE

# Finnish Meteorological Institute

29/07/2008









ILMATIETEEN LAITOS  
METEOROLOGISKA INSTITUTET  
FINNISH METEOROLOGICAL INSTITUTE



Kuva: Eija Vallinheimo



ILMATIETEEN LAITOS  
METEOROLOGISKA INSTITUTET  
FINNISH METEOROLOGICAL INSTITUTE







ILMATIETEEN LAITOS  
METEOROLOGISKA INSTITUTET  
FINNISH METEOROLOGICAL INSTITUTE





ILMATIETEEN LAITOS  
METEOROLOGISKA INSTITUTET  
FINNISH METEOROLOGICAL INSTITUTE









A J Punkka



















ILMATIETEEN LAITOS  
METEOROLOGISKA INSTITUTET  
FINNISH METEOROLOGICAL INSTITUTE







ILMATIETEEN LAITOS  
METEOROLOGISKA INSTITUTET  
FINNISH METEOROLOGICAL INSTITUTE





ILMATIETEEN LAITOS  
METEOROLOGISKA INSTITUTET  
FINNISH METEOROLOGICAL INSTITUTE



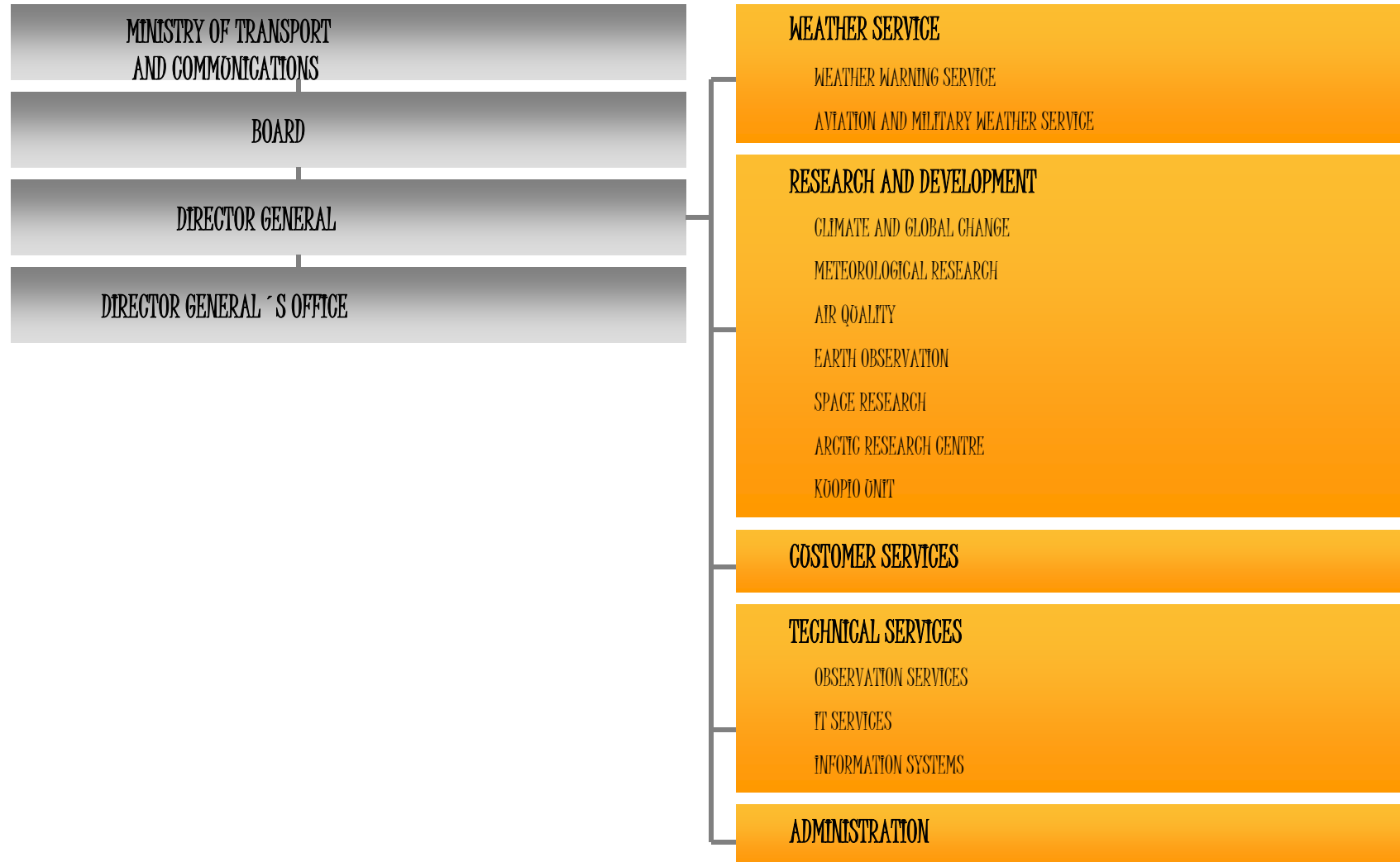




Finnish Meteorological Institute –  
Cutting-edge expertise in  
European atmospheric know-how



## Organisation on 1 March 2006







## Personnel

- 580 person-years
  - Research & development 280
  - Weather Service 100
  - Customer Services 40
  - Technical Services 120
  - Administration and Director General's Office 40
- women 40% - men 60%
- 55% academic degree
  - 15% PhD





# Economy

- Budget 45 million euro
  - 65% Budgetary funding (Ministry of Transport and Communications)
  - 35% Commercial operations or external research funding
- 50 % of research funded from external sources
  - EU
  - ESA
  - EUMETSAT
  - Academy of Finland
  - Finnish Funding Agency for Technology and Innovation







# CO<sub>2</sub> –concentration Pallas-Sodankylä

